

ARIPRO

Design, creation,
emergence, skills and
empowerment hub



Needs & Goals



Ineffective information and communication tools and methodology.

Direct communication, connection, and synergy that encourage proactive behaviour and appropriation

Internal and external networking to be consolidated in a systemic and comprehensive manner

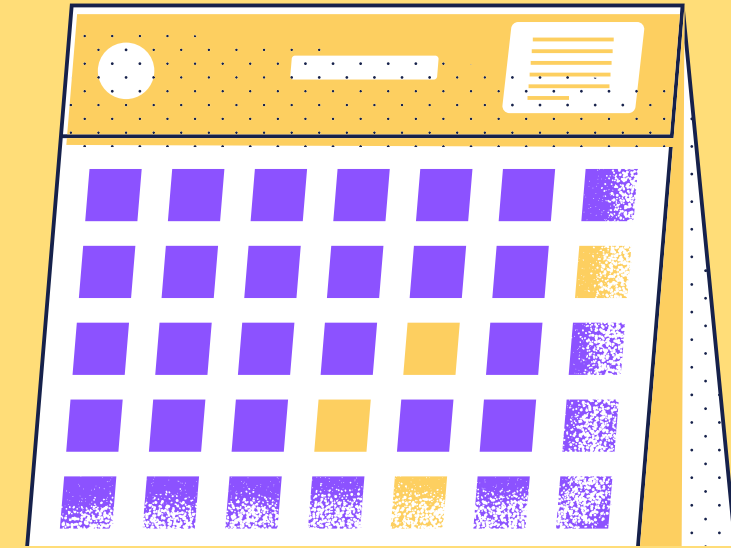
Encouraging instances of knowledge and internal exchange (multi-directional and multi-level), promoting the emergence of skills. and enhancing the synergy of internal skills

Needs related to the new programming, focus on cross-cutting design issues, and synergies between funds (National & EU)

Technical support that takes into account Trend Topics and Policies -
Focus on youth

3-STEP ACTION PLAN

CAPITALIZING THE EXISTING GOOD PRACTICES



INFORM

- Communication that promotes a 'Call to Action' to foster awareness of the feasibility of ideas in relation to opportunities.
- Systematic and comprehensive awareness raising and engagement
- Use of ICT for a smart and immediate information

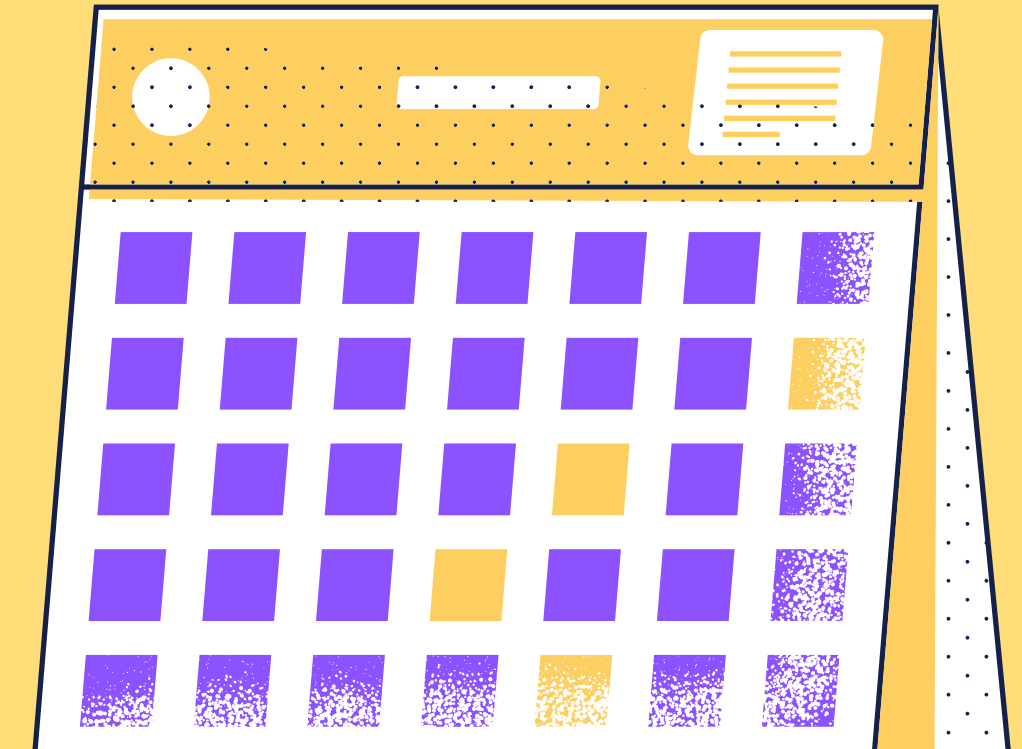
INVOLVE

- Sharing and creation of skills, enhancing new forms of engagement for young people..
- Involvement activities guidelines: External Expertise - Internal Expertise - Peer Learning

SUPPORT

- Technical design support to generate awareness about access to funds in terms of skills, knowledge and timing
Training and support tailored for different levels
- Expediting the creation of collaboration networks that facilitate mutual knowledge, learning, and sharing
-

OPERATIONAL OBSERVATIONS



It is essential to estimate the effort needed, in terms of human resources, in order to shape and implement the proposed activities.

Precision in determining the effort is crucial ,because it serves to create accurate and reasonable planning, without overlapping with the management efforts, and with a view to efficient team work

It is necessary to implement internal procedures and tools relating to the following:

1. Sharing of strategies
2. Information ecosystem
3. Monitoring of results and impacts (indicators)